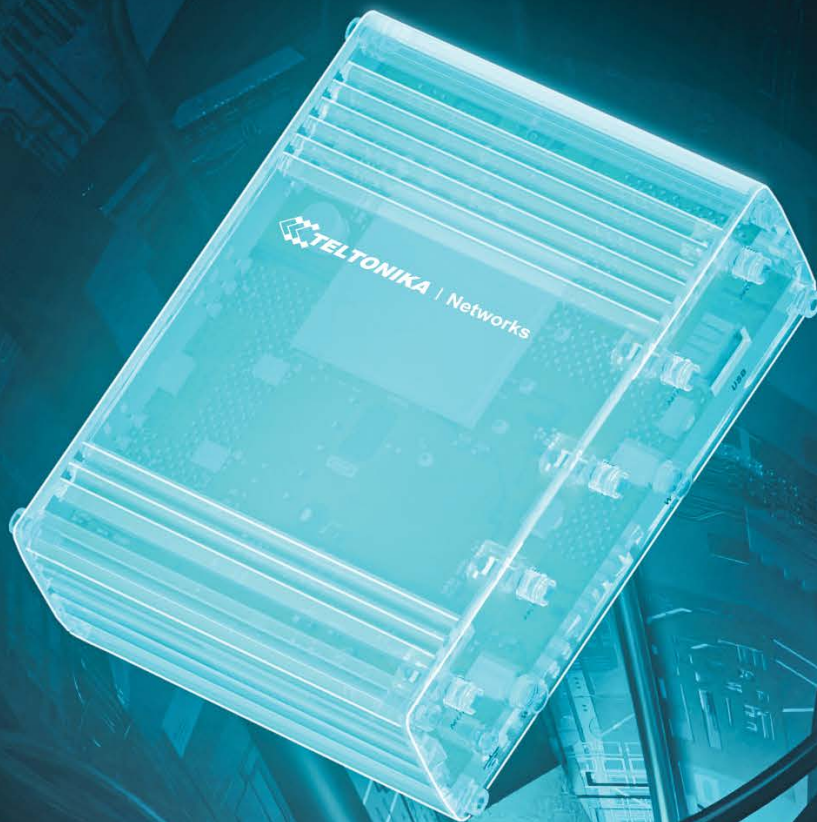


 **TELTONIKA** | Networks



# PRODUCT CATALOG

NORTH AMERICA

# TABLE OF CONTENTS

Who we are	4
What we offer	5
Hollistic approach	6
<b>RUTOS</b>	<b>8</b>
<b>RMS</b>	<b>10</b>
<b>ROUTERS</b>	
RUT2 & RUT3 series	12
RUT9 series	14
RUTX11	16
RUTM50	18
OTD140	19
Ethernet routers	20
<b>GATEWAYS</b>	
TRB2	22
TRB501	24
<b>SWITCHES</b>	
PoE+ switches	26
Ethernet switches	28
Managed switches	32
<b>ACCESS POINTS</b>	
TAP100	31
<b>DEVICE COMPARISON</b>	<b>35</b>
<b>ACCESSORIES</b>	<b>37</b>

# WHO WE ARE?

31 OFFICES  
IN 21 COUNTRIES

We are a rapidly growing technology company, manufacturing professional network connectivity equipment for international markets. Through long-term experience and research and development of industrial network devices for IoT and M2M communication, we have developed a wide portfolio of products for the most complex areas, such as Industry 4.0, Smart City, and Green Energy.



## OUR MISSION IS

to be a fast and flexible partner and be closer to our clients in every world region. Longstanding experience, reliable supply chain, and highest technology process models enable us to produce millions of IoT devices to our clients.

## OUR VISION IS

to become one of the global leaders providing unique IoT solutions that contribute to making people's lives easier. We are open-minded to establish the environment for the creative and ambitious work professionals in Lithuania and the rest of the world to grow and contribute towards our Mission.

## OUR VALUES ARE

not only working but also living to help and sharing kindness to people, especially those who need our help the most. We are keeping our values by continuously and courageously creating synergy between Teltonika IoT Group and business partners as well as clients.

26  
YEARS  
OF IOT  
BUSINESS

# WHAT WE OFFER?

WE HELP YOU  
CONNECT

We designed our product portfolio to help our partners access opportunities within the rapidly growing IoT and Industrial IoT space. It consists of modems, gateways, routers, switches, and IoT platforms. We have grown to be one of the leaders of cellular IoT devices for industrial and professional applications. From automation, smart grid, to public transport connectivity – hundreds of thousands of our networking products are currently at the heart of our partners' solutions.

## GROWING PORTFOLIO



+3

2018

+5

2019

+5

2020

+5

2021

+12

2022

+10

2023

## RELIABLE

We have long-standing experience manufacturing industrial devices that can withstand the most rigorous environments and offer connection continuity with multiple backup scenarios.

## SECURE

We assure the highest level of security for all Teltonika Networks products by performing regular safety tests and releasing periodical firmware updates to eliminate any risks of breaches.

## EASY TO USE

Industrial Teltonika Networks devices are designed mainly for professional applications, yet they are still easy to use. Offering products that do not require any special training is one of our strengths.

# HOLISTIC APPROACH



From concept to the finished product – we develop everything in-house to ensure maximum quality and efficiency. It enables us to move much faster because we do not rely on any externalities.

Over the years, we have implemented hundreds of customized projects, from the smallest firmware changes to full-scale hardware alterations. This experience helped our partners capture more opportunities in the fast-paced technology environment - together.

We make all of our products in the state-of-the-art Teltonika IoT Group manufacturing facility in Molėtai, Lithuania. Full control over our production allows us to ensure that we deliver only the best and most reliable devices.

**8 MODERN  
SMT LINES**

**100+ ROBOTS FOR  
AUTOMATION**

**500K MONTHLY  
MANUFACTURING CAPACITY**

FROM CONCEPT TO THE FINISHED  
**PRODUCT**

## EXPERIENCE

For more than 25 years we have been providing reliable Industrial IoT & M2M connectivity solutions that are secure and easy to use.

## FLEXIBILITY

We have implemented hundreds of customized projects from the smallest firmware changes to full-scale hardware alterations.

## ALL IN ONE

From concept to the finished product – we develop everything in-house to ensure maximum quality and efficiency.



# RUTOS

OpenWrt-based Linux OS designed for engineer ease of use, customisability, and efficient workflow.

## RELIABLE

Enhanced uninterrupted connectivity and protocol support for your IoT needs

## SECURE

Full of security features and failsafes to ensure maximum device and network security

## EASY TO USE

Streamlined and customisable UX for simple yet comprehensive management

### MOBILE

Mobile modes	Bridge, Passthrough, NAT
Mobile features	Auto SIM switching, SMS & Call control, SMS relays, SIM idle protection
Mobile communication control	Operator whitelist and blacklist, band lock, auto APN, multiple PDNs, USSD

### WIRELESS

Wireless modes	HotSpot, access point (AP), station (STA), wireless mesh (802.11s), fast roaming (802.11r)
Wireless security	WPA3-EAP, WPA3-SAE, WPA2-Enterprise-PEAP, WPA2-PSK, WEP, AES-CCMP, TKIP, auto cipher modes, client separation

### NETWORK

Connection monitoring	Ping reboot, Wget reboot, periodic reboot, LCP and ICMP for link inspection
Networking	WAN failover, load balancing, DDNS, QoS, VLANs, DHCP, VRRP
Routing	Static routing, dynamic routing (BGP, OSPF v2, RIP v1/v2, EIGRP, NHRP), routing rules

### SECURITY

Security basics	Preconfigured and customizable firewall, web filtering, DMZ, user control, firewall status
VPN and tunneling	OpenVPN, IPsec, L2TPV3, DMVPN, ZeroTier, WireGuard and many others
Authentication	Pre-shared key, digital certificates, X.509 certificates, TACACS+

### SERVICES

Time sync services	NTP (server, client), GNSS, Mobile operator.
Other services	I/O control, location services, WoL, network topology
Industrial protocols	Modbus, BACnet, DNP3, M-Bus, OPC UA, DLMS
Communication & monitoring	JSON-RPC, MQTT (broker, publisher, subscriber, Azure MQTT, Kinesis), SNMP, SSH, TR-069, WEB UI, CLI
Serial modes	Console, serial and M-Bus over IP, modem, Modbus gateway, NTRIP
USB services	Samba share, USB-to-serial, storage memory expansion, printer server, DLNA
3rd party cloud support	Azure IoT Hub, AWS IoT Greengrass, Cloud of Things, Cumulocity, ThingWorx

### CUSTOMIZATION

RutOS developed on	OpenWrt based Linux OS
Supported languages	Busybox shell, Lua, C, C++, Python
Development tools	Software development kit with a build environment
OS languages	English, German, Spanish, Portuguese, Japanese, Turkish

Please note this table is an overview of RutOS features and does not take into account individual device hardware incompatibilities with any given feature.



# RMS

## REMOTE MANAGEMENT SYSTEM

User-friendly platform for remotely accessing and controlling your fleet of devices, tailor-made to meet your remote IoT solution needs.

### ACCESS

Easy remote access to your devices – no public IP needed

### UNITE

Unified platform with multitenancy capabilities

### CUSTOMIZE

Adaptable interface and functionality to best fit your needs

### INTEGRATE

API support for integrating RMS into your solution



## TRY RMS FOR FREE

Explore the full potential of RMS with a **30-day trial!**

## MANAGEMENT

Gain complete and secure control over your fleet of Teltonika Networks routers and gateways – no public IP needed. Enjoy the flexibility of remote updates, monitoring, and enhanced configuration of your connectivity device ecosystem.

Protocol	MQTT
Security & encryption	TLS 1.2 X.509
Remote access & control	WebUI, SSH, Task Manager
Periodic backup	Daily, weekly, monthly
Alerts & Automation	Limitless customisation for alerts and automation configurations
Reporting	On demand, periodic
Configuration	Single or bulk parameters configuration, download existing configuration, configuration templates

## VPN

Secure your entire remote infrastructure quickly and easily with robust VPN connections – no extra protocols or servers needed. We'll take care of the complex configurations in the background.

Protocol	OpenVPN
Connection type	Layer 3
Cryptographic key	RSA 2048 bits
Data encryption	AES-256-GCM
VPN client	RMS VPN Hub, Quick Connect, VPN routing, VPN data usage graph
VPN client supported OS	Windows, Android, iOS, macOS, iPadOS

## CONNECT

Reach and remotely control your end devices connected to an RMS-compatible device. Using supported protocols, access to your industrial PC, CCTV camera, POS system or other intelligent device anywhere in the world is only a few clicks away.

Tunnelling protocol	SSH
Encryption	AES with 256-bit key
Supported protocols	HTTP(S), SSH, Telnet, SFTP, VNC, RDP, WebRTC
Remote device detection	IP detection and default service availability checking
Authentication	Network level, in-device

**BESTSELLER**

All-time star of LTE Cat 4 connectivity

**TRIED & TESTED**

Millions of units deployed worldwide

**MAXIMISED VALUE**

Perfect mix of interfaces, performance, and pricing



# RUT2 & RUT3 SERIES

RUT241 // RUT260 // RUT360



## RUT241

INDUSTRIAL CELLULAR ROUTER

**Mobile**

4G/LTE (Cat 4), 3G, 2G

**Flash memory & RAM**

16 MB Flash, 128 MB RAM

**Powering option**

4-pin power socket, 9-30 VDC

**Ethernet**

2 x 10/100 Mbps Ethernet ports:  
1 x WAN (configurable as LAN),  
1 x LAN

**Wi-Fi**

IEEE 802.11b/g/n, Access point (AP),  
Station (STA)

**Interfaces**

On 4-pin socket: 1 x Digital input,  
1 x Digital open collector output

**Housing & mounting**

Aluminum housing, plastic panels  
with DIN rail mounting option

**Measurements & weight**

83 x 25 x 74 mm, 125 g



## RUT260

INDUSTRIAL CELLULAR ROUTER

**Mobile**

4G/LTE (Cat 6), 3G, 2G

**Flash memory & RAM**

16 MB Flash, 128 MB RAM

**Powering option**

4-pin power socket, 9-30 VDC

**Ethernet**

2 x 10/100 Mbps Ethernet ports:  
1 x WAN (configurable as LAN),  
1 x LAN

**Wi-Fi**

IEEE 802.11b/g/n, Access point (AP),  
Station (STA)

**Interfaces**

On 4-pin socket: 1 x Digital input,  
1 x Digital open collector output

**Housing & mounting**

Aluminium housing, plastic panels  
with DIN rail mounting option

**Measurements & weight**

83 x 25 x 74 mm, 125 g



## RUT360

LTE CAT6 INDUSTRIAL CELLULAR ROUTER

**Mobile**

4G/LTE (Cat 6), 3G

**Flash memory & RAM**

16 MB Flash, 128 MB RAM

**Powering option**

4-pin power socket, 9-30 VDC

**Ethernet**

2 x 10/100 Mbps Ethernet ports:  
1 x WAN (configurable as LAN),  
1 x LAN

**Wi-Fi**

IEEE 802.11b/g/n, Access point (AP),  
Station (STA)

**Interfaces**

On 4-pin socket: 1 x Digital input,  
1 x Digital open collector output

**Housing & mounting**

Aluminum housing with DIN rail  
mounting option

**Measurements & weight**

100 x 30 x 85 mm, 247 g



**FLEXIBLE**  
More Ethernet ports for extra scalability

**FAIL-SAFE CONNECTION**  
Dual SIM with auto-failover and backup WAN



**HIGH-PERFORMANCE**  
Reliable, high-throughput LTE Cat 4 for industrial applications



# RUT9 SERIES

RUT951 // RUT956



## RUT951

INDUSTRIAL CELLULAR ROUTER

**Mobile**  
4G/LTE (Cat 4), 3G, 2G

**Flash memory & RAM**  
16 MB Flash, 128 MB RAM

**Powering option**  
4-pin power socket, 9-30 VDC

**Ethernet**  
4 x 10/100 Mbps Ethernet ports:  
1 x WAN (configurable as LAN),  
3 x LAN

**Wi-Fi**  
IEEE 802.11b/g/n, Access point (AP),  
Station (STA)

**Interfaces**  
On 4-pin socket: 1 x Digital input,  
1 x Digital open collector output

**Housing & mounting**  
Aluminum housing with DIN rail  
mounting option, plastic panels with  
flat mounting option

**Measurements & weight**  
110 x 50 x 100 mm, 287 g



## RUT956

INDUSTRIAL CELLULAR ROUTER

**Mobile**  
4G/LTE (Cat 4), 3G, 2G

**Flash memory & RAM**  
16 MB Flash, 128 MB RAM

**Powering option**  
4-pin power socket, 9-30 VDC

**Ethernet**  
4 x 10/100 Mbps Ethernet ports:  
1 x WAN (configurable as LAN),  
3 x LAN

**Wi-Fi**  
IEEE 802.11b/g/n, Access point (AP),  
Station (STA)

**Interfaces**  
1 x RS232; 1 x RS485; 1 x USB host;  
On 4-pin socket: 1 x Digital input,  
1 x Digital open collector output;  
On 10-pin socket: 1 x Isolated digital  
input, 1 x Digital dry input, 1 x Analog  
input, 1 x Isolated open collector  
output (requires external voltage),  
1 x Relay output (non-latching); GNSS

**Housing & mounting**  
Aluminum housing with DIN rail  
mounting option, plastic panels with  
flat mounting option

**Measurements & weight**  
110 x 50 x 100 mm, 287 g





# RUTX11

## INDUSTRIAL CELLULAR ROUTER

**Mobile**  
4G/LTE (Cat 6), 3G

**Flash memory & RAM**  
256 MB Flash, 256 MB RAM

**Powering option**  
4-pin power socket, 9-50 VDC

**Ethernet**  
4 x RJ45 ports, 10/100/1000 Mbps:  
1 x WAN (configurable as LAN),  
3 x LAN

**Wi-Fi**  
IEEE 802.11b/g/n 2.4GHz, IEEE  
802.11a/n/ac 5GHz, Access point  
(AP), Station (STA)

**Interfaces**  
1 x USB host; On 4-pin socket:  
1 x Digital input, 1 x Digital open  
collector output; GNSS

**Bluetooth**  
4.0 (Low energy)

**Housing & mounting**  
Aluminum housing with DIN rail  
mounting option

**Measurements & weight**  
115 x 44.2 x 95.1 mm, 456 g

### UNINTERRUPTED CONNECTIVITY

Dual SIM with auto-failover  
and backup WAN

### POWER PLAYER

Uncompromising high-speed  
connectivity for data-heavy  
applications

### VERSATILE

Multiple interfaces, protocols,  
and critical security features

# SO MANY DEVICES EVEN MORE USE CASES



SEE OUR USE CASE  
CATALOG



## WHAT ABOUT YOURS?



SHARE YOUR  
SOLUTION

**SINGLE-DIGIT LATENCY**

Engineered for mission-critical applications

# RUTM50



**INDUSTRIAL 5G ROUTER**



**5G**

Ultra-high cellular speeds of up to 3.4 Gbps

**FUTURE-PROOF**

Adaptable for the future, backward compatible with the past

**Mobile**  
5G Sub-6GHz SA/NSA, 4G/LTE (Cat 19)

**Flash memory & RAM**  
256 MB Flash, 256 MB RAM

**Powering option**  
4-pin power socket, 9-50 VDC

**Ethernet**  
5 x RJ45 ports, 10/100/1000 Mbps:  
1 x WAN (configurable as LAN),  
4 x LAN

**Wi-Fi**  
IEEE 802.11b/g/n 2.4GHz, IEEE 802.11a/n/ac 5GHz, Access point (AP), Station (STA)

**Interfaces**  
1 x USB host; On 4-pin socket:  
1 x Digital input, 1 x Digital open collector output; GNSS

**Housing & mounting**  
Aluminium housing with DIN rail mounting option

**Measurements & weight**  
132 x 44.2 x 95.1 mm, 533 g



# OTD140

**OUTDOOR 4G ROUTER**

**Mobile**  
4G/LTE (Cat 4), 3G, 2G

**Flash memory & RAM**  
16 MB Flash, 128 MB RAM

**Powering option**  
RJ45 Socket, 42.5-57 VDC

**Ethernet**  
2 x RJ45 ports, 10/100 Mbps  
1 x PoE In  
1 x PoE Out

**Housing & mounting**  
IP55 plastic housing

**Measurements & weight**  
110 x 49.30 x 235 mm, 855 g



**OUTDOOR DEPLOYMENT**

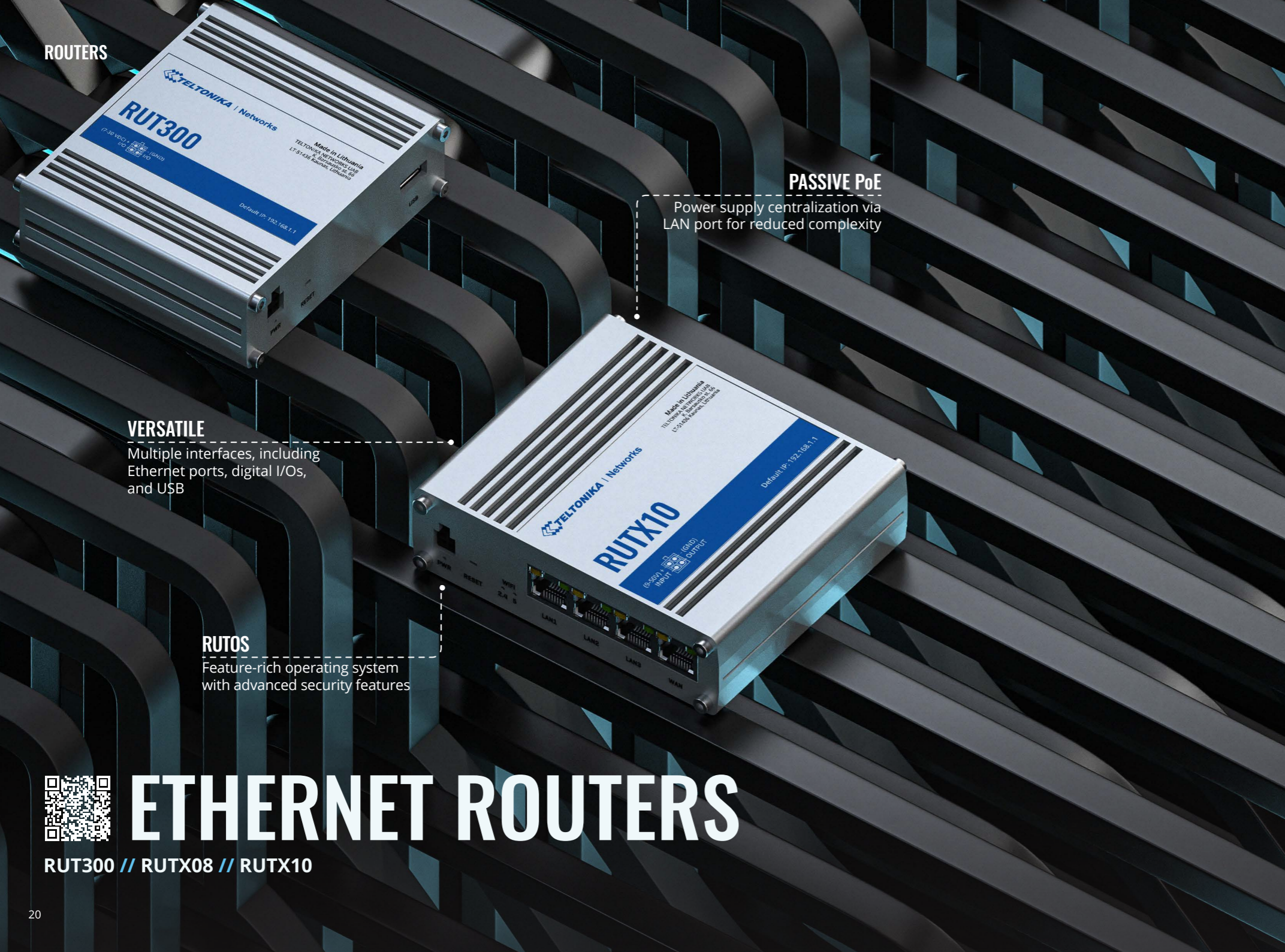
IP55 plastic housing & integrated mounting bracket

**DUAL SIM**

Auto-failover for maximum reliability

**POE-IN/OUT**

Flexible powering options & reduced cabling



**PASSIVE PoE**

Power supply centralization via LAN port for reduced complexity

**VERSATILE**

Multiple interfaces, including Ethernet ports, digital I/Os, and USB

**RUTOS**

Feature-rich operating system with advanced security features



# ETHERNET ROUTERS

RUT300 // RUTX08 // RUTX10



## RUT300

INDUSTRIAL ETHERNET ROUTER

**Flash memory & RAM**  
16 MB Flash, 16 MB RAM

**Powering option**  
4-pin power socket, 7-30 VDC

**Ethernet**  
5 x 10/100 Ethernet ports:  
1 x WAN,  
4 x LAN

**Interfaces**  
1 x USB host; On 4-pin socket:  
1 x Digital input, 1 x Digital open collector output

**Housing & mounting**  
Aluminum housing with DIN rail mounting option

**Measurements & weight**  
100 x 30 x 85 mm, 229 g



## RUTX10

PROFESSIONAL ETHERNET ROUTER

**Flash memory & RAM**  
256 MB Flash, 256 MB RAM

**Powering option**  
4-pin power socket, 9-50 VDC

**Ethernet**  
4 x RJ45 ports, 10/100/1000 Mbps:  
1 x WAN (configurable as LAN),  
3 x LAN

**Wi-Fi**  
IEEE 802.11b/g/n 2.4GHz,  
IEEE 802.11ac/n/a 5GHz

**Bluetooth**  
4.0 (Low energy)

**Interfaces**  
1 x USB host; On 4-pin socket:  
1 x Digital input, 1 x Digital open collector output

**Housing & mounting**  
Aluminum housing with DIN rail mounting option

**Measurements & weight**  
115 x 32.2 x 95.2 mm, 355 g

**UNINTERRUPTED CONNECTIVITY**

Dual SIM with auto-failover and backup WAN

**COMPACT SIZE**

All you need, right in your pocket

**VERSATILE**

Wide range of supported interfaces and I/Os



# TRB2 SERIES

TRB245 // TRB255



## TRB245

INDUSTRIAL M2M LTE GATEWAY

**Mobile**

4G/LTE (Cat 4), 3G, 2G

**Flash memory & RAM**

16 MB Flash, 64 MB RAM

**Powering option**

16-pin terminal, 9-30 VDC

**Ethernet**

1 x 10/100 Mbps Ethernet port

**Interfaces**

1 x RS232; 1 x RS485; On 16-pin socket: 3 x Digital input/Digital open collector output (configurable), 1 x Analog input; GNSS

**Housing & mounting**

Aluminium housing with DIN rail mounting option

**Measurements & weight**

83 x 25 x 74.2 mm, 165 g



## TRB255

INDUSTRIAL M2M GATEWAY

**Mobile**

4G/LTE (Cat M1), NB-IoT, 2G

**Flash memory & RAM**

16 MB Flash, 64 MB RAM

**Powering option**

16-pin terminal, 9-30 VDC

**Ethernet**

1 x 10/100 Mbps Ethernet port

**Interfaces**

1 x RS232; 1 x RS485; On 16-pin socket: 3 x Digital input/Digital open collector output (configurable), 1 x Analog input; GNSS

**Housing & mounting**

Aluminium housing with DIN rail mounting option

**Measurements & weight**

83 x 25 x 74.2 mm, 165 g

GATEWAYS // COMING SOON

**MISSION-CRITICAL**

Single-digit latency for mission-critical applications



# TRB501

## INDUSTRIAL 5G GATEWAY

**Mobile**

5G Sub-6Ghz SA/NSA, 4G/LTE (Cat 20), 3G

**Flash memory & RAM**

512 MB Flash, 256 MB RAM

**Powering option**

4-pin power socket, 9-30 VDC

**Ethernet**

1 x RJ45 port, 10/100/1000 Mbps

**Interfaces**

1 x Micro USB slave;  
On 4-pin socket: 1 x Digital input,  
1 x Digital open collector output  
(configurable)

**Housing & mounting**

Aluminum housing with DIN rail mounting option

**Measurements & weight**

100 x 30 x 93.4 mm, 241 g

**COMPACT SIZE**

One of the smallest 5G gateways in the market

**5G**

Ultra-high throughput of up to 1 Gbps

# YOUR NEEDS, OUR ANSWERS

Over years of experience, we've strived to find the recipe for responding quickly to emerging market needs. We do not believe in compromising on the efficiency, reliability, and ease of use of our devices – our products reflect our visions and our values.

**HEAD OF R&D**  
MANTAS ČIŽAUSKAS



**POE+**  
Power supply centralization  
for simplifying your solution

**KEY PERFORMANCE**  
Gigabit Ethernet ports for  
high-bandwidth data throughput

**INDUSTRIAL DESIGN**  
Compact, sturdy, and easy to install –  
perfect for industrial applications



# POE+ SWITCHES

TSW100 // TSW101 // TSW200



## TSW100

INDUSTRIAL UNMANAGED POE+ SWITCH

**Powering option**  
4-pin power socket, 7-57 VDC (input  
voltage range for PoE 44-57 VDC)

**PoE standart & total PoE power  
budget (at PSE)**  
802.3af and 802.3at, 120 W

**Ethernet**  
5 x RJ45 ports, 10/100/1000 Mbps:  
4 x PoE, 1 x Uplink

**Bandwidth (non-blocking)**  
10 Gbps

**Housing & mounting**  
Aluminum housing with DIN rail  
mounting option

**Measurements & weight**  
115 x 32 x 95 mm, 350 g



## TSW101

AUTOMOTIVE POE+ SWITCH

**Powering option**  
2-pin power DC socket, 9-30 VDC  
(input voltage range for  
PoE 9-30 VDC)

**PoE standart & total PoE power  
budget (at PSE)**  
802.3af and 802.3at, 60 W

**Ethernet**  
5 x RJ45 ports, 10/100/1000 Mbps:  
4 x PoE, 1 x Uplink

**Bandwidth (non-blocking)**  
10 Gbps

**Housing & mounting**  
Aluminum housing with DIN rail  
mounting option

**Measurements & weight**  
115 x 32 x 95 mm, 384 g



## TSW200

INDUSTRIAL UNMANAGED POE+ SWITCH

**Powering option**  
2-pin power socket, 7-57 VDC (input  
voltage range for PoE 44-57 VDC)

**PoE standart & total PoE power  
budget (at PSE)**  
802.3af and 802.3at, 240 W

**Ethernet**  
8 x RJ45 ports, 10/100/1000 Mbps

**Bandwidth (non-blocking)**  
20 Gbps

**Interfaces**  
2 x SFP

**Housing & mounting**  
Aluminum housing; Integrated DIN  
rail bracket (on a standart order  
code)

**Measurements & weight**  
132 x 44.2 x 95.1 mm, 517 g

**INDUSTRIAL-GRADE**

Sturdy aluminium housing resistant to vibrations and extreme temperatures

**PLUG N PLAY**

No additional configuration needed, no time wasted

**ADAPTABLE**

Wide voltage range and DIN rail mounting



# ETHERNET SWITCHES

TSW110 // TSW210 // TSW010 // TSW114 // TSW304



## TSW110

L2 UNMANAGED SWITCH

**Powering option**

4-pin power socket, 9 - 30 VDC

**Ethernet**

5 x RJ45 ports, 10/100/1000 Mbps

**Bandwidth (non-blocking)**

10 Gbps

**Housing & mounting**

Aluminum housing with DIN rail mounting option

**Measurements & weight**

100 x 30 x 85 mm, 227 g



## TSW210

UNMANAGED INDUSTRIAL SWITCH

**Powering option**

2-pin power socket, 7-57 VDC

**Ethernet**

8 x RJ45 ports, 10/100/1000 Mbps

**Bandwidth (non-blocking)**

20 Gbps

**Interfaces**

2 x SFP

**Housing & mounting**

Aluminum housing; Integrated DIN rail bracket (on a standart order code)

**Measurements & weight**

132 x 44.2 x 95.1 mm, 500 g

## SWITCHES



### TSW010

DIN RAIL SWITCH

#### Powering option

2-pin power DC socket, 9 - 30 VDC

#### Ethernet

5 x 10/100 Mbps Ethernet ports

#### Bandwidth (non-blocking)

1 Gbps

#### Housing & mounting

Anodized aluminum housing and panels; Integrated DIN rail bracket

#### Measurements & weight

113.1 x 27.4 x 80.5 mm, 146.5 g



### TSW114

DIN RAIL SWITCH

#### Powering option

2-pin power DC socket, 9 - 30 VDC

#### Ethernet

5 x RJ45 ports, 10/100/1000 Mbps

#### Bandwidth (non-blocking)

10 Gbps

#### Housing & mounting

Anodized aluminum housing and panels; Integrated DIN rail bracket

#### Measurements & weight

113.1 x 27.4 x 80.5 mm, 174 g



### TSW304

DIN RAIL SWITCH

#### Powering option

2-pin power DC socket, 7 - 57 VDC /  
9 - 40 VAC

#### Ethernet

4 x RJ45 ports, 10/100/1000 Mbps

#### Bandwidth (non-blocking)

8 Gbps

#### Housing & mounting

Anodized aluminum housing and panels; Integrated DIN rail bracket

#### Measurements & weight

102 x 25 x 81.5 mm, 210 g

# ALWAYS TESTING, ALWAYS IMPROVING

We work tirelessly to ensure the utmost security of our products, continuously search for and manage vulnerabilities, perform penetration tests, and act as watchdogs in the software design process. When the product is in your hands, you can trust its security wasn't handled lightly.

## HEAD OF CYBER SECURITY

DEIVIDAS VYŠNIAUSKAS



**FULL CONTROL**

Manage your entire network's infrastructure

**VERSATILITY**

Gigabit Ethernet, SFP, PoE+, and more

**PROFINET SUPPORT**

Supports Profinet & other key communication protocols



# MANAGED SWITCHES

TSW202 // TSW212



## TSW202

MANAGED PoE+ SWITCH

**Powering option**

2-pin power socket, 7-57 VDC (input voltage range for PoE 44-57 VDC)

**PoE standart & Total PoE power budget (at PSE)**

802.3af and 802.3at, 240 W

**Ethernet**

8 x RJ45 ports, 10/100/1000 Mbps

**Bandwidth (non-blocking)**

20 Gbps

**Interfaces**

2 x SFP

**Housing & mounting**

Anodized aluminum housing and panels; Integrated DIN rail bracket (on a standart order code)

**Measurements & weight**

132 x 44.2 x 122.2 mm, 610 g



## TSW212

MANAGED NETWORK SWITCH

**Powering option**

2-pin power socket, 7-57 VDC

**Ethernet**

8 x RJ45 ports, 10/100/1000 Mbps

**Bandwidth (non-blocking)**

20 Gbps

**Interfaces**

2 x SFP

**Housing & mounting**

Anodized aluminum housing and panels; Integrated DIN rail bracket (on a standart order code)

**Measurements & weight**

132 x 44.2 x 122.2 mm, 615 g

# CUSTOM PRODUCTS



All IoT & M2M projects are unique. If your solution requires an entirely-custom product, we're up to the challenge and here to help.

Our R&D team and in-house manufacturing give us full control of the custom product process, from concept to production, with maximum flexibility for large-scale projects.

Let's make your dream device a reality!



ACCESS POINTS

# TAP100



WI-FI ACCESS POINT

**Flash memory & RAM**  
16 MB Flash, 128 MB RAM

**Powering option**  
RJ45 Socket, 44-57 V

**PoE standard**  
802.3af PoE Class 1

**Ethernet**  
1 x RJ45 port 10/100 Mbps

**Wi-Fi**  
IEEE 802.11b/g/n 2.4GHz

**Housing & mounting**  
UV-stabilized plastic; integrated AP mounting bracket (for ceiling mount)

**Measurements & weight**  
Ø 158 mm x 30 mm, 190 g



**SLEEK DESIGN**

UV-stabilized plastic housing that blends in with its environment

**EASY INSTALLATION**

Integrated mounting bracket for easy ceiling setup



**POE-IN**

Can be powered by active PoE devices via RJ45 port

# PREFER TO WATCH, NOT READ?



EXPLORE OUR **YouTube** CHANNEL



# DEVICE COMPARISON

Products key features	TRB245	TRB255	TRB501	RUT241	RUT260	RUT360	RUT951	RUT956	RUTX11	RUTM50	OTD140	RUT300	RUTX10	TAP100
5G			•							•				
4G/LTE category	Cat4	M1/NB	Cat20	Cat4	Cat6	Cat6	Cat4	Cat4	Cat6	Cat20	Cat4			
3G	•		•	•	•	•	•	•	•	•	•			
2G	•	•		•			•	•			•			
CPU (MHz)	650	650	1500	580	580	650	580	580	4x717	4x717	580	650	4x717	580
RAM (MB)	64	64	256	128	128	128	128	128	256	256	128	64	256	128
Flash memory (MB)	16	16	512	16	16	16	16	16	256	256	16	16	256	16
Passive PoE														
PoE in											802.3af/at			
Power voltage (VDC)			9-30	9-30	9-30	9-30	9-30	9-30	9-50	9-50	42.5-57	7-30	9-50	802.3af
SIM card slots	9-30	9-30	1	1	1	1	2	2	2	2	2			44-57
Ethernet ports	2	2	1	2	2	2	4	4	4	5	2	5	4	
Ethernet speed (Mbps)	1	1	1000	100	100	100	100	100	1000	1000	100	100	1000	1
WiFi standard	100	100		n	n	n	n	n	ac	ac			ac	100
GNSS									•	•	•			n
Inputs/Outputs	•	•	2	2	2	2	2	7	2	2		2	2	
RS232	4	4												
RS485	•	•												
Bluetooth	•	•												
USB			Slave					Host	Host	Host		Host	Host	
DIN Rail mounting	•	•	•	•	•	•	•	•	•	•		•	•	
Rack mounting														
Flat surface mounting	•	•	•	•	•	•	•	•	•	•	•	•	•	•
Grounding terminal									•	•			•	
RMS support	•	•	•	•	•	•	•	•	•	•	•	•	•	•
RutOS	•	•	•	•	•	•	•	•	•	•	•	•	•	•

# DEVICE COMPARISON

Products key features	TSW100	TSW101	TSW200	TSW202	TSW110	TSW210	TSW212	TSW010	TSW114	TSW304
Managed				•			•			
MRP				•			•			
STP/RSTP				•			•			
Profinet				•			•			
EtherNet/IP				•			•			
QOS				•			•			
Passive PoE in					•			•	•	•
PoE out	802.3af/at	802af/at	802.3af/at	802.3af/at						
Power voltage (VDC)	7-57	9-30	7-57	7-57	9-30	7-57	7-57	9-30	9-30	7-57
Ethernet ports	5	5	8	8	5	8	8	5	5	4
SFP ports			2	2		2	2			
Ethernet speed (Mbps)	1000	1000	1000	1000	1000	1000	1000	100	1000	1000
DIN rail mounting	•	•	•	•	•	•	•	•	•	•
Flat surface mounting	•	•	•	•	•	•	•	•	•	•
Grounding terminal	•	•	•	•	•	•	•	•	•	•
RMS				•			•			

# POWERING OPTIONS



**Power supply, 9 W**  
US Order code: PR3PUUS3



**2-pin power supply, 9 W**  
US Order code: PR3PRUS6



**Power supply, 18 W**  
US Order code: PR3PXUS3



**Power supply, 24 W**  
US Order code: PR3P2US3



**Power supply, 62 W**  
US Order code: PR3PWUS3



**2-pin power supply, 62 W**  
US Order code: PR317USA



**Power supply, 130 W**  
US Order code: PR313US3



**2-pin power supply, 130 W**  
US Order code: PR318EUA



**2-pin power supply, 250 W**  
US Order code: PR320USA



**Universal power supply, 9 W**  
Order code: PR3PUPS3



**Automotive power supply**  
Order code: PR2AM20M



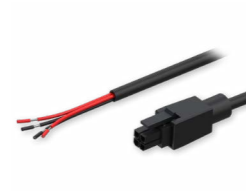
**BAT120 - uninterruptible power supply**  
Order code: BAT120000000



**DIN rail power supply**  
Order code: PR3PDNP0



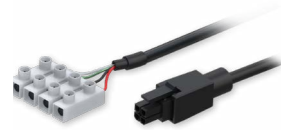
**DIN rail power supply, 15 W**  
Order code: PR321NP0



**Power cable with 4-wire open wire**  
Order code: PR2PL15B



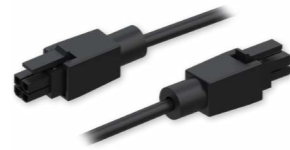
**4-pin plug with contact terminals**  
Order code: PR4MK04K



Power cable with 4-way screw terminal  
Order code: PR2FK20M



4-pin power adapter with I/O access  
Order code: PR5MEC21



4-pin to 4-pin power cable  
Order code: PR2PP10B



4-pin to barrel socket adapter  
Order code: PR2PD01B

# MOUNTING OPTIONS



Compact DIN rail kit  
Order code: PR5MEC11



DIN rail kit adapter  
Order code: PR5MEC23



DIN rail kit  
Order code: PR5MEC00



Rack mounting kit  
Order code: PR5MEC26



Surface clip holder kit  
Order code: PR5MEC22



Surface mounting kit  
Order code: PR5MEC12



TSW1 rear panel with DIN rail holder  
Order code: PR5MEC24



TSW2 rear panel with DIN rail holder  
Order code: PR5MEC25

# ANTENNA OPTIONS



5G Combo MIMO mobile/GNSS/Wi-Fi roof SMA antenna  
Order code: PR1KC640



5G mobile magnetic SMA antenna  
Order code: PR1KS536



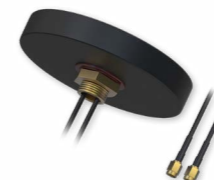
5G mobile SMA antenna  
Order code: PR1US540



Bluetooth magnetic SMA antenna  
Order code: PR1KRT25



GNSS adhesive SMA antenna  
Order code: PR1KSG30



Combo MIMO mobile roof SMA antenna  
Order code: PR1KCL25



Combo MIMO mobile/GNSS/Wi-Fi roof SMA antenna  
Order code: PR1KCO28



Combo QUAD mobile/GNSS roof SMA antenna  
Order code: PR1KCL28



Combo SISO mobile/GNSS/Wi-Fi roof SMA antenna  
Order code: PR1KCS28



Mobile magnetic SMA antenna  
Order code: PR1KS210



Mobile SMA antenna  
Order code: PR1US440



SMA cable extension  
Order code: PR2VM20M



Wi-Fi dual-band magnetic SMA antenna  
Order code: PR1KRD30



Wi-Fi dual-band SMA antenna  
Order code: PR14RD35



Wi-Fi magnetic SMA antenna  
Order code: PR1KRF30



Wi-Fi SMA antenna  
Order code: PR1URF51



**Crowd-support forum**  
[community.teltonika-networks.com](https://community.teltonika-networks.com)

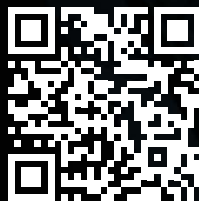


**Wiki knowledge base**  
[wiki.teltonika-networks.com](https://wiki.teltonika-networks.com)



**Teltonika Networks**  
[teltonika-networks.com](https://teltonika-networks.com)

**CONTACT US**



[info@teltonika.lt](mailto:info@teltonika.lt)